



J O N E



## برخص الغالي على شانك

”مرحبا مليار بقبالك يا سفر داري و الاوطاني يا سعادة  
من لفي دارك الانالي بي الوزا باني برخص الغالي على  
شانك لا تخلي حاله حاتي خذنيه بالروف و احسانك و  
انصفينيه منك بوزاني اسلبتني نظرة اعيانك و حت  
نومي ذار ما جاني هان ربي كل من هانك يا بصيري و  
مقلة اعياني عز لي صورك باحسانك فرد مالك واحد  
ثاني بالجمال و منطق لسانك صورك من حور لجناني  
يك والجيون بها صانك والمباسم ورد والواني“

من أشعار المغفور له صاحب السمو

الشيخ زايد بن سلطان آل نهيان رحمه الله تعالى

SHEIKH ZAYED BIN SULTAN BIN ZAYED AL NAHYAN



# RKM DURAR PROPERTIES

The leading property development company that plays part of Dubai's ambitious development plans. Reinforced by strategic alliances with exceptional partners, our success is closely linked with our commitments to creating and delivering exceptional developments. Delivering outstanding developments during the global financial challenges is undoubtedly the key to our investors' trust.







## DUBAI

The address of a global community

A rapidly growing city

A combination of modernization and rich cultural heritage

The highly valued and charming Arab hospitality coupled with an ultramodern infrastructure

The place where everything is possible and big dreams can be achieved

The result of a great vision

## DOWNTOWN DUBAI

Nearby Downtown Dubai which is described as "The Centre of Now", the thriving city hub with a unique mix of aesthetically designed residential, hospitality and commercial towers.

The world's tallest building "Burj Khalifa" and the world's largest shopping and entertainment destination "Dubai Mall" along with the world's tallest performing fountain "Dubai Fountain" all are part of Downtown Dubai with the Opera District and Sheikh Mohammed Bin Rashid Boulevard; Downtown Dubai is the world's most visited destination.



## DUBAI WATER CANAL

Described as Dubai's grandest project, Dubai water canal adds a unique tourist and commercial showpiece offering a new style of living in Dubai.



## MARASI BUSINESS BAY

Linked with Marasi Business Bay a mixed-use waterfront destination that represents a new dimension in Dubai's residential, tourism and retail sector.





# J ONE

"J One"; an Emirati heritage name for the finest quality pearl; that is spherical in shape with a bright white pinkish color.

Guided by strong roots of the heritage background of the diving industry of the UAE and conceptualized from the "J One" pearls, shells and waves of the sea.

The result is a new landmark in Dubai.

*It is "J One".*





## J ONE TOWERS

"J One" comprises of two towers which are connected through 6 signature townhouses (villas) with an impressive open plaza that forms an ultimate spot for catching up with friends.

With floor to ceiling, window framing and stunning views, "J One" is a work of art designed especially to bring in optimal light into the living space.







The epitome of highly stylised ultra-modern design, the interiors combine international style designed from the local traditions of diving and pearl hunting creating an environment of understated elegance.





Designer furniture and high-end materials that range from rich timbers, natural stone to fine fabrics and elegant chandeliers give life to the interiors. Additionally, complete services such as concierge services, in-house cleaning, food delivery, dry cleaning and bellboy services are provided giving the option for holiday homes services that provide true turnkey solutions where all details are taken care of for you.





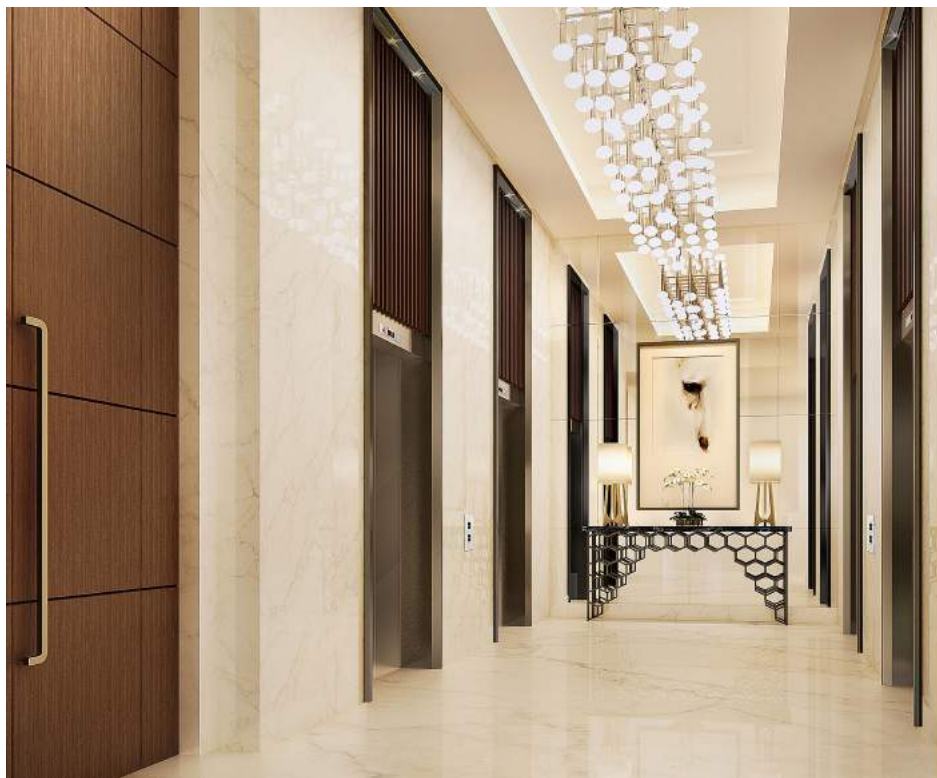


The interiors were inspired by using the latest finishes, materials and inspired by the local culture and heritage of Dubai. The use of marble, wood, stainless steel, special glass, customized carpets and high-finished ceilings create the uniqueness of "J One's" interiors.











Private pools and decks of the town houses feature luxurious seating areas overlooking the water canal and are part of the unique features of "J One".





For a lifestyle beyond now, enjoy unmatched five star facilities provided at the gym and health club to restore your health, body and mind in a luxurious setting unlike any other.



Health clubs	2 nos.
Swimming pools	4 nos.
Steam	4 nos.
Sauna	4 nos.

Open plaza with signature sculptures and beautiful landscapes

Highly specified design interiors

VIP lounge for private celebrations

Concierge

Optional In-house cleaning

Optional lease within the concept of holiday homes

Sky Gardens



An iconic view of the Burj Khalifa and Grand Water Canal can be enjoyed from the rooftop swimming pools at "J One". A peaceful sanctuary to relieve the stresses of the day.





